



I.N.F.O. Industry News for Oregon

Winter Issue 2016

70 SW Century Dr.
Suite 100, #353
Bend, Oregon 97702
(541)389-6692
www.O2WA.org
info@O2WA.org

INSIDE THIS ISSUE

Presidents Message

Nominations for Board Seats

Welcome New Members

Conference Program

OESAC Approved Classes

Annual Members Meeting

Scholarship Program

Statements and opinions expressed in these articles are solely those of the author or authors and may or may not be shared by O2WA.

PETERSON



**2016 O2WA
Rodeo Sponsor**



**OREGON ONSITE
WASTEWATER ASSOCIATION**

www.o2wa.org



OESAC APPROVED 12 HOURS OF CONTINUING EDUCATION = 1.2 CEU's

GEAR UP! 22nd Annual Oregon Onsite Wastewater Conference

April 8 & 9, 2016 – Riverhouse Hotel & Convention Center – Bend, OR

O2WA Officers

President
Brannon Lamp, REHS
Past President
Chris Rhodaback
President Elect
Erin Mick, REHS
Treasurer
Aaron Dennis, WS
Secretary
Brian Rabe, CPSS, WWS

O2WA Board of Directors

Septic Tank Pumper
Trent Clinkscates
Engineer
Dennis Boeger, P.E.
Manufacturer
Larry O'Connor
Soil Scientist
Larry Olander, WWS
Installer
Steven Humphreys
Sanitarian
Brannon Lamp, REHS
Tank Mfg.
Doug Dilley
O&M
Dustin Kenton
County Regulator
Erin Mick, REHS
Industry at Large
Aaron Dennis, WS
DEQ Exofficio
Randy Trox, REHS
Executive Director
Belinda Rasmussen, CMM

Save them money. Save energy. Save the environment.



Get **\$400⁰⁰** cash back when you buy an **AdvanTex® Wastewater System**

Do your customers need a wastewater system for their home? Do they live in the PGE or Pacific Power service area? Choose an energy-efficient Orenco® AdvanTex® system, and they can get a \$400 cash incentive from Energy Trust of Oregon

AdvanTex not only turns household wastewater into crystal clear effluent, it uses just \$2-3/month in electricity. So, in addition to your \$400 cash back, you'll also save them \$\$\$ hundreds of dollars in electricity, every year.

You can find out more: <http://energytrust.org/residential/incentives/water-heating/wastewatertreatment>

Contact your local AdvanTex Dealer for more details:

AdvanTex Dealers:

Bend Winsupply: (541) 647-2440
Edgewater Northwest, Newport: (541) 563-4227
Ferguson Enterprises, Eugene: (541) 773-4323
HD Fowler Eugene 541-607-0081
HD Fowler, Medford: (541) 770-4432
HD Fowler Redmond 541-389-7577
HD Fowler, Wilsonville: (503) 783-3490
KIE Supply, LaGrande: (541) 963-4622
Prior Pipe & Supply, Salem: (503) 363-1434
Willamette Graystone, Eugene: (541) 726-7666



AdvanTex® AX20-RT and AX20



President's Message by Brannon Lamp, REHS

Folks, it's that time of year again. Time to "Gear Up!" for the 2016 22nd Annual Oregon Onsite Wastewater Conference. The conference this year is being held at the Riverhouse Hotel & Convention Center in Bend on April 8-9. Registration for the conference is **OPEN NOW**, so look for the registration form in this newsletter or visit us at www.o2wa.org.

As usual, we've got some great presenters lined up for this year, including the always popular, knowledgeable and entertaining David Gustafson as our Keynote Speaker.

It's been my pleasure serving as the organization's president this year and I look forward to continuing to volunteer and serve the O2WA. I'd like to take a moment to thank our wonderful **ALL-VOLUNTEER** directors and officers who give up so much of their time, energy, and resources to help support us. Also a huge thanks goes out to the various folks who have served as committee members, and other supporters who have donated their time or goods to the organization. Last but certainly not least, a big thanks to our Executive Director, Belinda Rasmussen. She is the one that keeps this machine running and we really appreciate it. Finally, please give a warm welcome to your incoming president for 2016-17, Erin Mick. I have no doubt she will serve us well over the next year.

Nominations for Board Seats

Directors shall be elected by the then-current voting members. The following board seats are open for nominations.

ENVIRONMENTAL HEALTH SPECIALISTS

MANUFACTURER

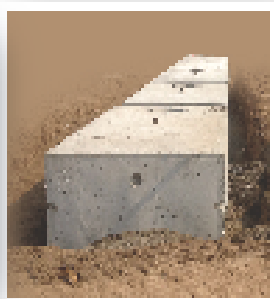
SOIL SCIENTIST

Send in your nomination via email to info@o2wa.org.

Nominees for positions on the Board of Directors must have demonstrated a commitment to the mission and purposes of Oregon Onsite Wastewater Association, and must have expertise in areas relevant to the needs of the or-



www.WillametteGraystone.com



With over 65 years of experience we offer:

Tanks ranging from 500-3000 gallons

Applications include septic, dosing, water, and custom tanks

Residential and commercial treatment systems

Now stocking Roth Tanks

The best one piece plastic tank in the industry.

Ideal for those hard to access locations.

The only plastic tank that is approved by Oresco.

Roth

**Oresco Systems[®]
Incorporated**

**OREGON
LOCATIONS:**

CORVALLIS
541 752 3456

GRANTS PASS
541 479 1323

NORTH BEND
541 756 6413

SALEM
503 585 1323

WOOD VILLAGE
503 689 7612

BEND
541 388 3811

EUGENE
541 726 7666

MEDFORD
541 773 4575

ROSEBURG
541 673 3322

TUALATIN
503 692 0150

**Willamette
Graystone**

SALCOR UV DISINFECTION

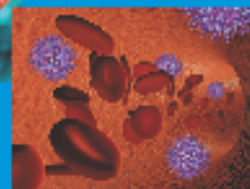
**No Water
"Wasted"**

Since 1978

**Inactivates Life-Threatening
"Superbugs"**



EBOLA



MRSA



**Preserves Sensitive
Environments!**

DUKE'S OCEANFRONT RESTAURANT, MALIBU, CA

Easy Install/O&M Ground or Pump Tank

ELECTRIC STORMS,
HURRICANES,
FLOODS



**Survives Many
Weather Disasters**



BOOTH
3000

A WORLDWIDE ONSITE UV DISINFECTION LEADER

■ Protects Health & Environment

■ Onsite Residential, Commercial & Municipal Uses to 100,000+ GPD

■ Revolutionary Teflon® Barrier Resists Fouling ■ Low Cost, Low Maintenance

■ Continual Monitoring for Proper Operation ■ Most Third Party Tested & Approved

■ UL Certified NEMA 6P "Floodproof" (30-Days Underwater)

■ NSF/Washington State 6-Mo Each Fecal Coliform Tests with 21 Different ATU units

■ 2-Year Warranty, Unit & Lamp

EXAMPLES OF SALCOR INSTALLATIONS



Mud River Project, WV
Over 100 Salcor 3G UV
Units Installed with
ANUA Post Filters



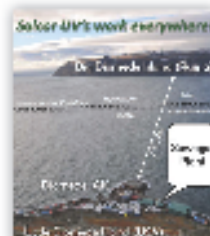
Elementary School, MO
3 Salcor 3G UV Units
(Parallel Array) in
Extended Aeration



Parallel/Series Arrays
Gravity Flow
Disinfection
to 100,000 GPD



Nursing Home, OH
2 Salcor 3G UV Units in
Series with an
Activated Sludge Plant
Replaces Chlorination



Sewage Plant, AK
Little Diomed Island
Salcor 3G UV Unit with
Lifewater Engineering Unit



UL
LISTED

3G UV
UNIT

9,000 GPD
GRAVITY
FLOW



Salcor Inc. 760.731.0745

F: 760.731.2405
jsruver@aol.com

WHAT YOU NEED WHERE AND WHEN YOU NEED IT

**competitive prices.
unmatched value.
quality products.
added service.**

We are positioned to take
your project to the next level
with the industry's best
products and know-how.

Discover how we can work
together to get it done for your
business at: www.hdfowler.com

HD Fowler Company is the oldest and largest independent, family-owned distributor of
waterworks, irrigation, pumps and wastewater treatment equipment
in the Pacific Northwest, and one of the largest in America.



**H.D. FOWLER
COMPANY**

much more than pipe, valves, and fittings

OREGON	
Eugene	541-607-0081
Medford	541-770-4432
Redmond	541-923-2090
Wilsonville	503-783-3490

WASHINGTON	
Bellevue	425-746-8400
Bellingham	360-734-8400
Bremerton	360-377-4507
Marysville	360-651-2400
Olympia	360-459-7300
Pacific	253-863-8600
Pasco	509-545-0255
Spokane	509-568-8400
Vancouver	360-574-9377
Wenatchee	509-886-8804
Yakima	509-248-8400

IDAHO	
Boise	208-846-8366
Hayden	208-772-9060
Idaho Falls	208-522-3466
Twin Falls	208-734-8838

MONTANA	
Bozeman	406-388-1169

over 100 years strong

Welcome New Members & Membership Benefits:

WELCOME!

Edward Varga E & A SYSTEMS INC.
Boyd Humbert Bob Humbert & Son, Inc.
Tonya Humbert Bob Humbert & Son, Inc.
Scott Nebeker, Oregon Parks and Recreation Dept.
Darrell Mond, Oregon Parks and Recreation Dept.
Scott Stewart, Oregon Parks and Recreation Dept.
Letha Crawford, Oregon Parks and Recreation Dept.

BENEFITS of MEMBERSHIP

- Provide persons engaged in the design, installation, maintenance, and regulation of on-site wastewater treatment and disposal systems an association through which lawful efforts may be made towards solving problems of on-site wastewater with the result that the general public shall receive the highest possible standard of safe, sanitary and environmentally sound on-site wastewater service.
- Provide a forum for research, exchange of ideas, information and technology among private industry, professionals and government policy makers and regulators.
- Develop programs to further the education, training and certification of persons involved in design, installation, maintenance and regulation of on-site systems.
- Actively participate in public and private efforts in development and acceptance of new and improved practices, policies, laws and regulations for on-site wastewater treatment and disposal.
- Develop, sponsor and support programs to improve on-site wastewater treatment and disposal, including uniform standards for on-site technologies.
- Participate as a member in other local, state or national associations with common needs, goals or purposes.
- Provide for professional representation and contract for assistance and the ability to coordinate and respond to the common needs of members including, without limit, membership benefit programs.

VOLUNTEERS NEEDED - Contact the O2WA Office to get involved - 541-389-6692



Septic Tanks • Water Cisterns Pump Tanks • Holding Tanks Rain Water Harvesting

Multi Usage

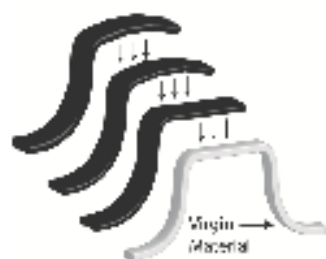
Multi Layer

Multi Coverage

- Inner layer of FDA approved virgin HDPE, two inside layers of PE for improved stability, plus one outer layer of black and UV-stabilized PE
- Lifetime* corrosion protection and 5 years of labor insurance
- Strongest & heaviest poly tank on the market
- No water for backfilling required
- Low profile
- 100% watertight

Oregon DEQ Approved

Our multi-layered tank construction, consisting of virgin material surrounded by 3 layers of protection.



*see warranty for details

BEST TANK. BEST WARRANTY. BEST SYSTEM.

Roth Global Plastics
www.rothmultitank.com 866-943-7256



OREGON ONSITE
WASTEWATER ASSOCIATION
www.o2wa.org



OESAC APPROVED 12 HOURS OF CONTINUING EDUCATION = 1.2 CEU's

GEAR UP! 22nd Annual Oregon Onsite Wastewater Conference

April 8 & 9, 2016 – Riverhouse Hotel & Convention Center – Bend, OR

The Oregon Onsite Wastewater Association (O2WA) conference offers an excellent opportunity for any interested party to gain access to the active wastewater professional. Persons, companies and publications should consider exhibiting, sponsoring, and/or donating auction/raffle prizes.

ABOUT THE CONFERENCE: 12 Hours of Continuing Education are available at the two day conference. This conference is for industry professionals including **public health officials, O&M service providers, engineers, consultants, installation contractors, septic pumpers, and others interested in onsite wastewater management.** You will learn about the latest in onsite wastewater industry issues and approaches to onsite wastewater management.

CONTINUING EDUCATION UNIT REQUIREMENTS

DEQ: Under OAR 340-071-0650, installer and maintenance provider recertification is required every three years following initial certification. 18 hours (1.8 Continuing Education Units, CEUs) of approved continuing education are required.
APPROVED

CCB: For more information on requirements for Commercial & Residential Contractors go to <http://www.oregon.gov/CCB>. The CCB will be advising if the program is approved.

EHS: Environmental health specialists and Wastewater specialists must complete 2.0 credits or 20 contact hours every two years as specified under Oregon Administrative Rule (OAR) 338-020-0050.

LOCATION: The Riverhouse Hotel & Convention Center, 2850 Rippling River Court, Bend, OR 97701

LODGING: O2WA rates at the Riverhouse of \$114.00 plus tax and availability. Call 800-547-3928 and be sure to ask for the group discount for O2WA attendees. Rate will be available until March 5, 2016.

EXHIBITS: Exchange ideas and discuss new products and/or services.

FRIDAY EQUIPMENT RODEO - EVERYONE is welcome to compete for prizes!

PETERSON

CAT

Rodeo Sponsor

FRIDAY RECEPTION | DINNER | AUCTION: Included with Full Conference Registration. Guests will pay an additional fee.

REGISTRATION INCLUDES: Sessions, session materials, Friday and Saturday Continental Breakfast, Friday and Saturday lunch. Only Full Conference registration includes all meals + Reception & Dinner on Friday. Space is limited - early registration is encouraged. Registration will be accepted on a first-come, first serve basis. Registrations received after March 5, 2016 will pay a late registration fee.

AUCTION/RAFFLE: The auction and raffle is how O2WA funds the Scholarship Program. The purpose of this program is to (1) promote education in the environmental sciences or other related academic pursuits that apply to the field of onsite wastewater treatment, and (2) promote the education of members of the O2WA and their direct relatives in any field of higher education.



Conference Sponsored by O2WA - Conference Registration @ www.o2wa.org
GEAR UP! 22nd Annual Oregon Onsite Wastewater Conference
Program



Friday, APRIL 8TH

7:00	Registration, Continental Breakfast, Exhibits		
8:30	Welcome and Orientation		
8:45 - 9:45	Key Note - David M. Gustafson, NAWT - Gearing up for Success Gears are little things that can make a big difference in the outcome of a situation. Being careful and aware of these gears can be the difference between a successful and profitable experience. We will discuss and explore some of these little details and gears in Onsite Sewage treatment and how they can fit into your business.		
9:45	Break		
10:15 - 11:15	General Session - Dave Belyea, Oregon DEQ, Program Manager Onsite Program Overview and Updates		
11:25 - 12:25	General Session - Paula Hartland, ODOT - What's New with ODOT? As soon as I think I've got it figured out, they change it... State and Federal DOT are continually changing regulations in an effort to improve highway safety. Change, though sometimes hard to keep up with, is not always a bad thing. Let's take a look at recent and upcoming changes that will affect you as a motor carrier.		
12:30-2:00	Lunch, Exhibits, Equipment Rodeo		
	Track 1	Track 2	Track 3
2:00 - 3:00	Tough Sites: Recognizing What They Are and an Overview of Solutions David Gustafson, NAWT Recognizing what they are and an overview of solutions.	Pipes and Glue Lewis Settle, Retired HD Fowler The purpose of this class is to define the different types of pipe and fittings and how they fit together with an emphasis on how to glue PVC pipe.	Being No 1 in No 2... The Money is in the Goo Paul Chierichetti, Mr. Rooter These would be covering the basics of business management: numbers, books, overhead and how to figure it (something most of us only do after the fact). The other part of the presentation would be practical applications of how to get this done
3:00	Break		
3:20 - 4:20	Record Keeping Paula Hartland, ODOT Non-compliance, whether intentional or not, can come with a costly price tag. In this class we will discuss the State and Federal DOT record keeping regulations related to driver qualification and maintenance.	Alkaline Stabilization of Domestic Septage Larry Brown, REHS, Oregon DEQ Alkaline Stabilization of Domestic Septage is a talk that discusses the treatment and land application of domestic septage for beneficial use purposes. This talk is mainly for pumpers who may be interested in setting up their own disposal and treatment facility but can be educational to others who want to know how this material is treated and disposed of beneficially.	Assessment Of Time Of Transfer Inspections and Existing System Evaluations Report Robert Barnes, Kings Pumping This class will bring attendees up to date on this process, the use of the revised inspection form, its proper completion and the financial benefit to on-site professionals in offering this service to their clients and the clients of the local real estate organizations.
4:30 - 5:30	ODOT Round Table Q&A Paula Hartland, ODOT Have you ever wanted to ask a question, but didn't know who to ask or didn't want to draw attention to yourself by asking the question? In this session there are no names and no stupid questions. Come ready to ask those burning questions that have plagued you or come to listen to others ask the questions while everyone benefits from the answers.	Pump Sizing Larry O'Connor, RepCo A discussion of how to determine flow rates and bar napkin pump sizing. Best practices when sizing a pump.	Stretch Flex: How to Get Your Team Ready for the Day! Erin Mick, REHS, Regulator Multnomah County, Personal Trainer An on site stretching program should encourage all employees to get ready for the day. Stretching programs should be conducted during the morning safety briefing.
5:30 - 6:30	No Host Bar and Reception		
6:30 - 9:00	Dinner, Equipment Rodeo Awards and Auction		



Conference Sponsored by O2WA - Conference Registration @ www.o2wa.org
GEAR UP! 22nd Annual Oregon Onsite Wastewater Conference
Program



Saturday, APRIL 9TH - 8:30-2:00

OSHA FOCUS FOUR SERIES - The Washington On-site Sewage Association (WOSSA), John Thomas, Executive Director
INCLUDED WITH REGISTRATION FEE.

REQUIRED TO ATTEND ALL FOUR HOURS. PRE REGISTRATION REQUIRED.

Topic Titles: OSHA Focus Four

- Falls: It's not the fall that will kill you....it's the sudden stop!
- Struck by: Don't look now or you'll be sorry!
- Caught by/between: If you can't see my mirrors, I can't see you!
- Electrocution: Was the last guy on the job named "McGyver"?

Saturday, APRIL 9TH

7:30 Breakfast and Exhibits

	Track 1	Track 2	Track 3
8:30 - 9:30	Water Tables Brian T. Rabe, CPSS, WWS Senior Soil Scientist II, Cascade Earth Sciences The unique definitions and circumstances as they apply in Oregon.	Basic Electrical Theory and Troubleshooting As It Relates To Onsite Septic Controls Mark McCollum, SJE Rhombus Presentation on basic electrical theory as it relates to residential/light commercial control panels.	8:30 – 2:00 OSHA Focus Four - WOSSA Program Pre-Registration Required Must Attend All 4 Hours
9:40 - 10:40	Drip Field Approval Robert Sweeney, REHS, Environmental Management Systems DEQ approval for their Wastewater Subsurface Dripfield (GWSD) technologies in Oregon.	Nitrogen Reducing Systems, Maintenance Scott Hammersmith, Orenco Systems New information regarding Nitrogen reducing systems, maintenance, etc.	OSHA Focus Four Continued Must Attend All 4 Hours
10:40	Break and Exhibits		
11:00 - 12:00	Website 101 Dan Wiltse, REHS, Oregon DEQ How to maneuver the sites to find what you need.	Nitrogen Reducing Systems, Maintenance Continued Scott Hammersmith, Orenco Systems	OSHA Focus Four Continued Must Attend All 4 Hours
12:00 - 1:00	Lunch and Annual Members Meeting		
1:00 - 2:00	Concrete Septic Tank Standards and Installation Doug Dilley, Willamette Graystone The goal of this presentation is to explain tank construction standards and installation guidelines What they are and why they are important.	What Really Goes On Behind Site Evaluations - an Eastern Region Perspective Larry Brown, REHS, Oregon DEQ Discusses the Environmental Health Specialist; what they look for when conducting site evaluations and discusses the reasons why we are needing to protect public health.	OSHA Focus Four Continued Must Attend All 4 Hours
2:00	Break		
2:20 - 3:20	Identify the Cause Before You Treat the Symptoms Brian T. Rabe, CPSS, WWS, Senior Soil Scientist II, Cascade Earth Sciences Skipping the first step could cost you or your customer a bundle.	Operation & Maintenance Round Table	Insurance Updates for Contractors Rex Lesueur, Bancorp Insurance What contractors need to know when hiring subcontractors and how their policy may be affected.
3:30 - 4:30	Agronomy and Land Application Larry Brown, REHS, Oregon DEQ A talk that discusses the importance of agronomy and how it relates to land application proposals whether or not we are dealing with biosolids, recycled waste water; septage applications; industrial wastewater or the land application of waste solids under the solid waste program. This talk is mainly for consultants to provide an insight to the agronomic rate and what DEQ looks for to protect waters of the state.	Installer Round Table	Out of Sight - Out of Mind! Robb Barnes, Kings Pumping A key part of this regular maintenance is reminding the homeowner when it is time to service their on-site system. This class will explain a simple but very effective way to utilize a reminder card system based on the tools built in to the Quick-books accounting program. Attendees are encouraged to bring their own laptop with their Quick-books installed so they can actually go through the few simple steps involved in setting up a reminder card system.
4:30	Conference Concluded		

Program subject to change without notification.

OESAC

The Oregon Environmental Services Advisory Council (OESAC) evaluates non-credit educational programs and assigns CEUs

To further technology education in the State of Oregon, particularly in known environmental arenas such as water supply operators, wastewater operators, hazardous wastes technicians and other environmental media technicians as needs arise. To accomplish this mission through cooperative efforts among community colleges, professional organizations, adjacent States, public entities and private training units.

O2WA sponsors an annual conference. This year it is approved for 1.2 CEU's for O&M Providers and Installers. In addition the CCB is evaluating the conference for Series B Classes. The OHA has approved the conference for 12 CEU's.

System Installers and Maintenance Providers

Question regarding the DEQ Onsite Wastewater Management Program. Call (541)686-7905 or (toll-free in Oregon at 1-800-844-8467 x7905 for information or visit their website: <http://www.deq.state.or.us/wq/onsite/onsite.htm>

Additional classes available go to <http://www.oesac.org>.

Webinars Sponsored by Orenco Systems, Inc - www.orengo.com

Nutrient Removal – 2 hour – Mar 2 Tristian Bounds Across the United States, regulations are restricting nutrient discharges from wastewater systems at an increasing rate. Nitrogen – a common element found in agricultural fertilizers and human waste – is a nutrient of concern, and in some locations can be limited to <3 mg/L Total Nitrogen at discharge from the treatment system. Decentralized wastewater treatment systems can provide better, more reliable technologies for reducing nitrogen through biological processes. These solutions are easy to maintain and energy efficient. In this two-hour webinar, we will discuss the use of Orenco treatment alternatives for nutrient reduction.

Controls – 1 hour – Mar 9 Jeff Pringle Control panels are useful for a wide range of water and wastewater applications. This one-hour webinar will cover the various control panels options available, their features, and suggested applications.

***NEW* Life-Cycle Costing – 1 hour – Mar 16 Grant Denn** For decades, effluent sewers have had a difficult time competing against other collection technologies for projects because there was not enough data on the real costs to install and operate effluent sewer systems. But there is now long-term data that demonstrates that effluent sewer collection systems can affordably serve communities of all sizes. This webinar will compare capital cost information compiled from over 50 publicly funded bids for effluent sewer, grinder sewer, and gravity sewer, as well as look at operational costs for these technologies. This webinar will also include a demonstration of the WERF (Water Environment Research Foundation) wastewater planning tool.

***NEW* Composites – 1 hour – Mar 23 Darren Simmie** Orenco Composites manufactures a fiberglass building that is unique to the industry and has many advantages. Attendees will become familiar with essential considerations for specifying fiberglass buildings along with product and configuration options that can meet a variety of needs. In addition, the advantages of using fiberglass vs. other materials will be presented. A number of examples will be shown that will cover a wide variety of industries and applications.

***NEW* Greywater Treatment Systems – 1 hour – Mar 30 Jeff Pringle** As the supply of freshwater resources decreases, greywater reuse has become an increasingly attractive option for conserving potable water, both in California and in many other parts of the world. Greywater represents a substantial portion of combined wastewater flows and can be treated to levels that allow it to be used for toilet flushing, cooling towers, water features, and landscape irrigation.

Annual Members Meeting

At the annual meeting voting members will hear and consider reports from the Board of Directors, officers and staff concerning the activities, management and budget of the corporation.

Date: April 9th

Time: 12:00 pm -1:00 pm

The luncheon meeting will be included with your conference registration fee.

If you would like to attend the luncheon only please contact the office at 541-389-6692 or email info@o2wa.org.

Scholarship Program

Attention Members: Deadline for Scholarship Applications Extended to May 31, 2016

Go online to www.o2wa.org - Members Resources Tab

The purpose of this fund is to (1) promote education in the environmental sciences or other related academic pursuits that tie into the field of onsite sewage treatment, and (2) promote the education of members of the Oregon Onsite Wastewater Association (O2WA) and their direct relatives in any field of higher education. The number of scholarships and the amounts will depend on fundraising results and the number of highly qualified applicants. Scholarships will be awarded for the 2016/17 academic year.

Any Student May Apply

To qualify students must fit in one of these two categories:

A) Be a member of O2WA in good standing since May of the previous year or a direct relative of an individual, corporate, or honorary member in good standing, who is pursuing an education beyond high school. Direct relatives include members, their sons or daughters (includes step-children). Members or direct relatives of members of O2WA may choose any field of study related or not related to onsite wastewater treatment.

B) Any person interested in pursuing an education beyond high school through study in fields related to onsite wastewater treatment. Students are limited to relevant fields of study that apply to the field of onsite wastewater treatment, including, but are not limited to, public health, environmental science, soil science, engineering, construction technology, or biology.

Any 2-year community college or 4-year college or university, any accredited vocational or trade school, whether the institution is public, private, or nonprofit, will be considered an eligible educational institution. It is not essential that the school be located in Oregon.

Congratulations to the 2015 Scholarship Recipients - Taylor GeDeros, Emily Rasch, Karisa Howry, Kara Merrill, Karisa Merrill and Bailey Wells. These scholarships are possible through the fund raising efforts of volunteers and sponsors Thanks to those that donated to the 2015 Auction and Raffle.

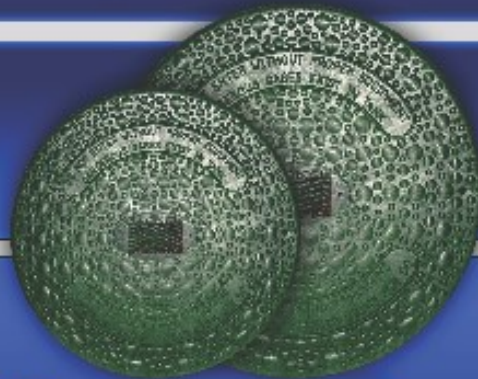
A&B Septic
Al Coupling
Advanced Drainage Systems, Inc.
Advantage Precast Inc
American Manufacturing
American Onsite Septic Plumbing
Repair
Aqua Natural Solutions
Aqua Tech Systems
Aqua Test Inc
Attbar, Inc.
Bancorp Insurance
Belco Manufacturing Co.
Bend Win Supply
Bio-Microbics
Boeger and associates
Brown & Sons
Brown & Sons
Cascade Earth Sciences

Cascade Earth Sciences
Containment Solutions
Cosmos Creations
Clinkscales Portable Toilets &Septic
Service
CSI Controls
Davis Sales
Ecological Tanks, Inc.
Fextex Systems Inc.
FMI Truck Sales & Service
Frank J Martin
H.D. Fowler Company
Infiltrator Systems, Inc.
Kings Plumbing
Matzke Sales, Inc.
Michaels Precast Concrete, LLC
MIKE HAMER INC.
Norwesco
Oregon Waste Water Services

Orenco Systems, Inc.
Polylok
Peterson Cat
Proto-Tek Corporation
RepCo Sales Agency
River City Environmental Services
Roth Global Plastics
Salcor Inc
Spartan Tool
TUF-TITE, INC
Waite Concrete
Willamette Graystone

**Champion
Pump**

**EFFLUENT PUMPS
SEWAGE PUMPS
GRINDER PUMPS**



**SUMP BASINS
CHECK VALVES
SLIDE RAIL ASSEMBLIES
SEPTIC RISERS & LIDS**



**ALARMS
FLOATS
PUMP PANELS**



**SEPTIC FILTERS
RISERS & LIDS
PUMP SYSTEMS**



**SEPTIC COMPONENTS
ADVANCED TREATMENT SYSTEMS
SAND FILTERS
DRIP DISPOSAL SYSTEMS**



**ROTARY FAN PRESS
MOBILE SYSTEMS
SKID SYSTEMS**



www.RepCOSalesAgency.net

22ND ANNUAL OREGON ONSITE WASTEWATER CONFERENCE – GEARING UP YOUR SUCCESS!

CONFERENCE REGISTRATION FORM

REGISTER ONLINE AT WWW.O2WA.ORG OR COMPLETE AND MAIL THIS FORM WITH PAYMENT TO:

Oregon Onsite Wastewater Association 70 SW Century Dr., PMB #353, Bend, OR 97702

If you have any questions, please contact O2WA Office (541)389-6692 or Email info@o2wa.org

Company or Organization _____

Attendees Full Name _____

DEQ Installer Certification # _____

DEQ O&M Certification # _____

CCB # _____

Second Attendees Full Name _____

DEQ Installer / O&M Certification / CCB # _____

Third Attendees Full Name _____

DEQ Installer / O&M Certification / CCB # _____

Address _____

City/State/Zip _____

Daytime phone _____ Fax _____ Email _____

In the case of an emergency please list a contact person: _____ Phone # _____

Registration fee includes educational sessions, tradeshow, events, breakfast & lunch on Friday & Saturday plus Friday night banquet & auction

***2016 Member Discounted Registration Fee:**

☐ 2 Day Conference Registration # Attendees ____ x \$310.00 = \$ _____

☐ 1 Day Conference Registration # Attendees ____ x \$270.00 = \$ _____ I will be attending ☐ Friday or ☐ Saturday

Registration Fee + Individual Membership:

☐ 2 Day Conference Registration # Attendees ____ x \$405.00 = \$ _____

☐ 1 Day Conference Registration # Attendees ____ x \$365.00 = \$ _____ I will be attending ☐ Friday or ☐ Saturday

ADD -

☐ Exhibition Hall & All Meals for Guests Not Earning CEU's # Guests ____ x \$170.00 = \$ _____

☐ Friday Equipment Rodeo \$0.00

☐ Guests Friday Night Reception & Banquet # Guests ____ x \$ 55.00 = \$ _____

☐ Saturday 4 Hour Class Provided by WOSSA \$0.00

Registrations after March 5, 2016 Late Fee \$20.00

TOTAL PAYMENT AMOUNT (calculated from above) \$ _____

PLEASE ANSWER THE FOLLOWING QUESTIONS:

☐ I have dietary or special needs _____

☐ I will be bringing a guest. Guest(s) Name: _____

☐ I will be signing up to compete in the Equipment Rodeo – No extra charge.

☐ I will be attending FRIDAY NIGHT BANQUET

PRE-REGISTRATION REQUIRED FOR The Washington Onsite Sewage Association (WOSSA) 4 hour class on OSHA Focus Four. You must attend all 4 hours.

☐ I WILL BE attending the 4 hour class provided by The Washington Onsite Sewage Association (WOSSA) John Thomas, Executive Director on Saturday.

☐ I WILL NOT be attending the 4 hour class provided by The Washington Onsite Sewage Association (WOSSA) John Thomas, Executive Director..

METHOD OF PAYMENT: ☐ Check Enclosed or Charge My ☐ Discover Card ☐ American Express ☐ Visa ☐ MasterCard

Account # _____ Code _____ Expiration Date _____

Authorized Signature _____ Name as it appears on credit card _____

Cancellation Policy: Full registration fees will be refunded if a written cancellation notice is received at O2WA office by 1:00 P.M. March 30, 2016.